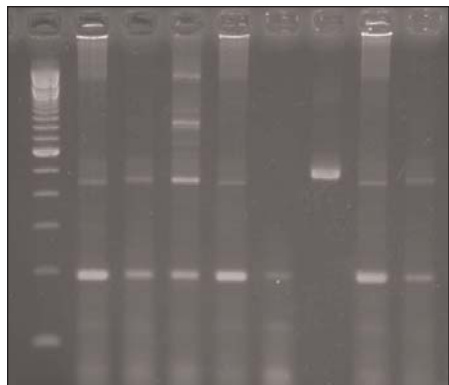


# MolecuLab 301 & 302

## Genetically Modified Foods, PCR Simulation



Designed for six teams of students, the entire MolecuLab 301 or 302 can be completed in three 45-50 minute class periods. Additional time should be allowed to review discussion questions.



This lab presents all the concepts offered in MolecuLabs 310 and 320. Instead of performing PCR themselves, your students will receive preamplified corn-based DNA samples. They will separate

these samples on high resolution agarose gels and analyze PCR products to determine which foods are genetically modified. Choose methylene blue or ethidium bromide staining.

### Ordering Information:

**MolecuLab™ 301 (Ethidium Bromide Staining)**  
E1-3001 .....\$120

**Replacement Biologicals, 301**  
E1-3201 (shaded in blue below) .....\$79

**MolecuLab™ 302 (Methylene Blue Staining)**  
E1-3002 .....\$120

**Replacement Biologicals, 302**  
E1-3202 (shaded in blue below) .....\$79

### MolecuLab™ 301 or 302 Includes:

- Nuclease-Free Distilled Water
- Pre-amplified control DNA from certified GM corn
- Student protocols and Instructor's Manual on CD
- High Resolution Agarose Powder
- TBE Buffer Powder
- Methylene Blue Stain (302 only)
- Ethidium Bromide Stain (301 only)
- Pre-amplified DNA from corn meal and corn chips
- 100 bp DNA Size Ladder
- Ethidium Bromide Disposal Kit (301 only)
- 6X Gel Loading Dye
- 12 Staining Trays
- 1.5 mL Microtubes
- Gloves

*Ready-To-Go™ is a registered mark of Amersham Pharmacia Biotechnology.*



For more information call: **1-800-DNA-FOTO** (800-362-3686) or 262/369-7000 direct dial  
 FAX: 262/369-7017 • E-mail: [info@fotodyne.com](mailto:info@fotodyne.com) • Web-site: [www.fotodyne.com](http://www.fotodyne.com)  
**FOTODYNE Incorporated** • 950 Walnut Ridge Drive • Hartland, WI 53029-9388 • USA

