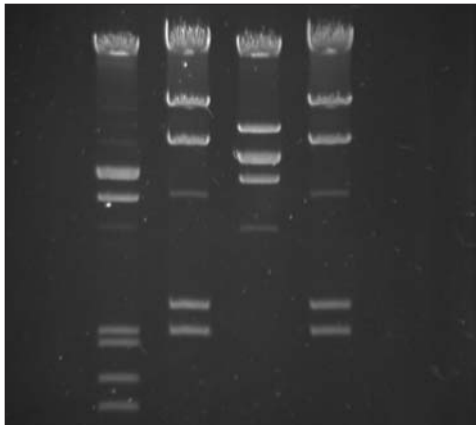


MolecuLab™ 105 & 106

DNA Fingerprinting Simulation: A Forensic Case



Designed for six teams of students, this exercise requires two 45-50 minute class periods. At least one additional class period should be included to allow students to inspect the crime scene and to develop a plan for their laboratory investigation.

Results from MolecuLab 105

A crime has been committed in your science lab. You can solve this crime by using "DNA Fingerprinting". You organize your students into cooperative teams consisting of a research scientist, a lab technician, a quality control officer, and a lab manager. Each team must then develop a plan of action, using concept maps and flow charts, to proceed with the investigation.

Developed for secondary biology students by Judy Brown, a Maryland educator, this simulated DNA fingerprinting lab provides all the reagents and supplies necessary to have your students analyze DNA samples by agarose gel electrophoresis. Each team of students will receive four tubes containing DNA predigested with different restriction enzymes. After electrophoresis, the separated DNA fragments are stained in either ethidium bromide (**105**) or methylene blue (**10**) for an incriminating analysis.

Ordering Information:

MolecuLab™ 105 (Ethidium Bromide staining)

E1-2005\$110

Replacement Biologicals, 105

E1-2205 (shaded in blue below)\$69

MolecuLab™ 106 (Methylene Blue staining)

E1-2006\$110

Replacement Biologicals, 106

E1-2206 (shaded in blue below)\$69

MolecuLab™ 105 or 106 Includes:

- Dehydrated DNA samples for gel electrophoresis, 6-tubes of each: Victim, Evidence, Suspect 1, Suspect 2
- 1X gel loading dye
- Agarose powder
- TBE buffer powder
- Ethidium bromide (105 only) stain
- Methylene Blue (106 only) stain
- Ethidium bromide disposal kit (105 only)
- Staining trays
- Gloves
- One CD containing student protocols and instructor's manual



For more information call: **1-800-DNA-FOTO** (800-362-3686) or 262/369-7000 direct dial
 FAX: 262/369-7017 • E-mail: info@fotodyne.com • Web-site: www.fotodyne.com
FOTODYNE Incorporated • 950 Walnut Ridge Drive • Hartland, WI 53029-9388 • USA

